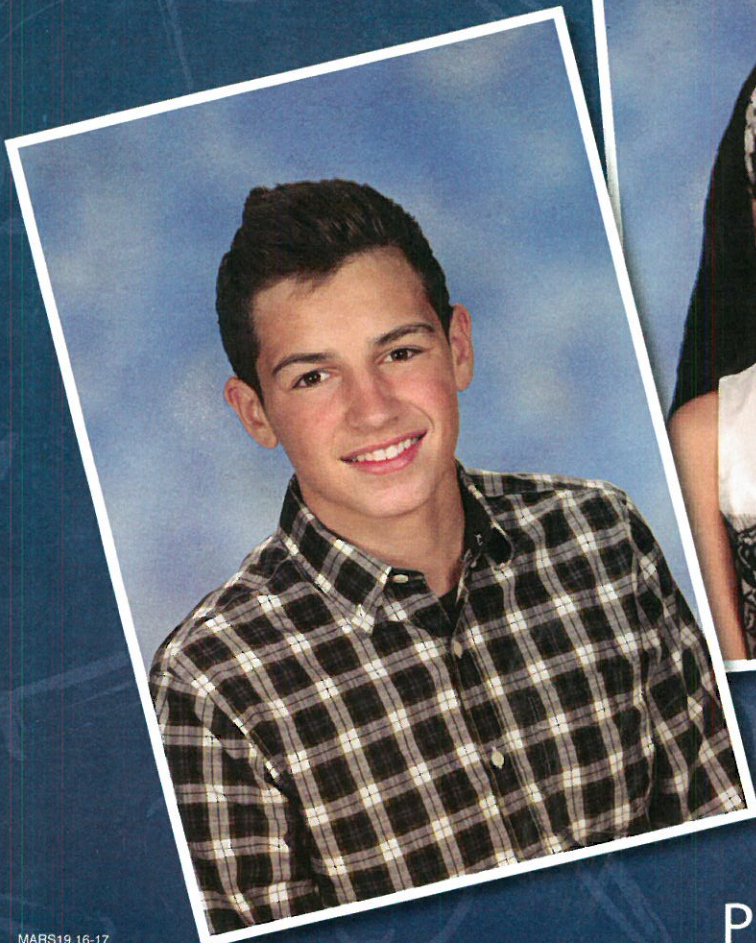




Share the

MEMORIES!

Picture Day
is Coming Soon!



Background design,
color and portrait image size
may vary from those illustrated.

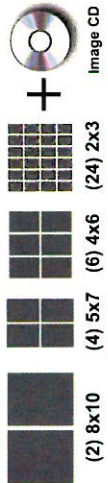
Professional Portraits at School



visit us @
www.schoolpix.com

(you will need your school's pre-order keycode to place online orders)

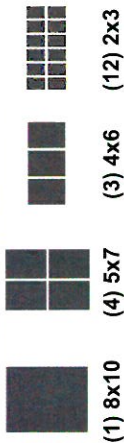
PACKAGE #1



\$80

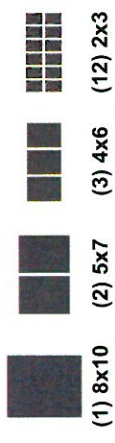


PACKAGE #2



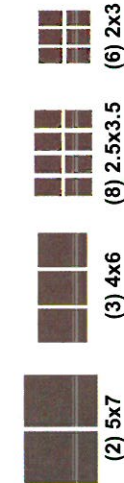
\$50

PACKAGE #3



\$45

PACKAGE #4



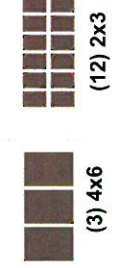
\$40

PACKAGE #5



\$30


PACKAGE #6



\$20

À LA CARTE OPTIONS

You may add these to any package or purchase them separately

A Fun Pack	\$10.00	E 8 x 10 Portrait	\$16.00	P Playing Cards	\$19.00
B Border for Portraits <small>(must purchase a portrait with this item)</small>	\$5.00	F 5 x 7 Portrait (1)	\$13.00	R Retouching of Facial Blemishes <small>(must purchase a portrait with this item)</small>	\$9.00
		H 3 x 5 Magnets (2)	\$15.00	S Snowflake Ornament	\$14.00
C Student Image on CD <small>(with copyright release)</small>	\$25.00	J 1.75 x 2.5 Wallets (16)	\$11.00	T Travel Mug 22oz <small>(stainless steel)</small>	\$22.00
		K Key Chains	\$12.00	W Water Bottle <small>(stainless steel)</small>	\$21.00
		L 11 x 14 Canvas Print (1)	\$35.00		
		M Magic Mug 11oz	\$17.00		

ALL PRICES INCLUDE RETAIL SALES TAX

PLEASE RETURN FORM ON PICTURE DAY

1 PLEASE ENTER THE REQUESTED INFORMATION:

Student's First Name _____ Student's Last Name _____
 School Name _____ Home Phone _____
 Teacher's Last Name _____ Student Grade _____ Homeroom # _____

E-mail _____

If your child wears glasses, please indicate your preference: **GLASSES ON** **GLASSES OFF**

2 PACKAGE SELECTION (You may choose more than one package.)

PACKAGES	Qty	Price	Total
PACKAGE 1		\$80	
PACKAGE 2		\$50	
PACKAGE 3		\$45	
PACKAGE 4		\$40	
PACKAGE 5		\$30	
PACKAGE 6		\$20	

3 À LA CARTE UPGRADES (You may choose more than one upgrade.)

Fun Pack	Code	Qty	Price	Total
Key Chains	K			\$12
11 x 14 Canvas Print (1)	L			\$35
Magic Mug 11oz	M			\$17
Playing Cards	P			\$19
Retouching	R			\$9
Ornament	S			\$14
Travel Mug 22oz	T			\$22
Water Bottle	W			\$21

4 PLEASE TOTAL YOUR ORDER:

Please make checks payable to: **School Pictures, Inc.**

I HAVE PAID BY: CASH MONEY ORDER CHECK NEED CHANGE

Payment by check is your express authorization that it may be converted into a one time Electronic Fund Transfer (EFT) from your account and all returned checks or EFT's may be represented electronically along with a separate EFT or demand draft for the maximum returned check fee by state law. Inquiries 800-450-0124 or www.statecheckfees.com. All prices include MD retail sales tax.

NOTE TO PHOTOGRAPHER