

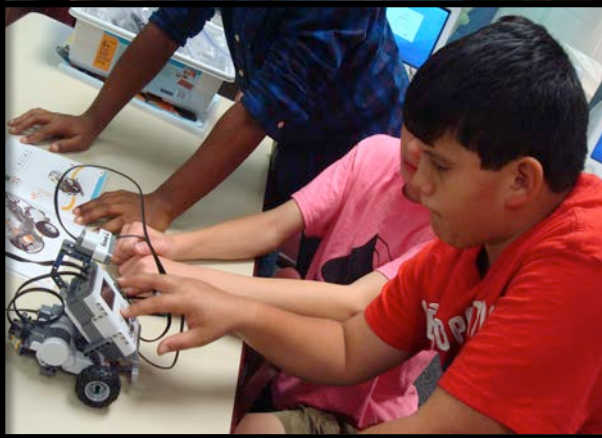
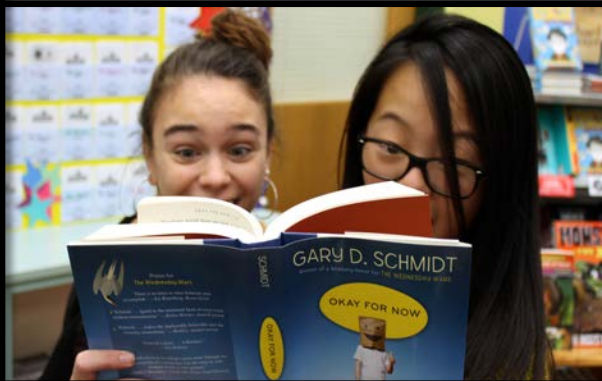


**Howard  
County**  
Public School System

# Middle School Gifted and Talented Program

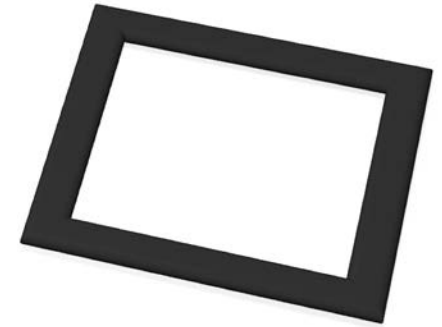


**GIFTED &  
TALENTED**  
EDUCATION PROGRAM



# Agenda

- Overview of the Middle School G/T Education Program
- Placement Process
- Questions



# Program Components



GIFTED &  
TALENTED

EDUCATION PROGRAM

- Talent Development Offerings
- G/T Classes and Curricular Extensions
- Extended Day/Extended Year Programs

# Talent Development Offerings: G/T Instructional Seminars



**Instruction in  
Advanced-Level  
Skills**



**Open to All  
Interested  
Students**



**Creative  
Production or  
Inquiry**





# G/T Instructional Seminars



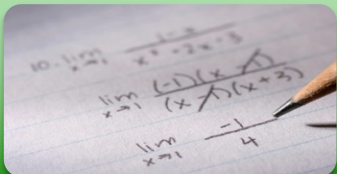
# G/T Content Classes

- Accelerated and/or Enriched Curriculum
- Advanced-Level Content
- Inquiry-Based Instruction
- Application of Knowledge





# Middle School G/T Classes



G/T Math



G/T Science



G/T English



G/T Social Studies

# G/T Mathematics

Provides an accelerated and enriched sequence that follows a curriculum of concepts at least two years above the general education curriculum.

- 6 - Pre-Algebra G/T
- 7 – Algebra I G/T
- 8 - Geometry G/T



# G/T English

Extends the Maryland College and Career Ready Standards for English Language Arts through

- an accelerated pace,
- reading and analyzing challenging and complex literature and literary nonfiction independently,
- writing a variety of interpretive,
- and analytical pieces, and conducting independent research.

Differentiated tasks and texts are included at all grade levels.

# G/T Social Studies

Provides an enriched and accelerated curriculum, including differentiated objectives, where students explore civic and cultural principles and engage in inquiries that focus on essential, related questions.

6 – Geography and World Cultures G/T

7 – Geography and  
World Cultures G/T

8 – United States  
History G/T



# G/T Science

An enriched and accelerated curriculum where students explore cross-cutting concepts, as well as science and engineering practices.

- 6 – Earth Science  
G/T
- 7 - Life Science G/T
- 8- Physical Science  
G/T





# Placement Process For Middle School G/T – 5th Grade

## 5<sup>th</sup> Grade

- CogAT administered to ALL students in December.
  - Meets State COMAR requirement for an ability measure.
  - Helps identify students who may underperform in school.
  - No longer requires parent/teacher request for testing.
- All students reviewed as part of G/T Placement Process.

# Parental Input in Placement Process

If after reviewing the Placement Committee's professional recommendation, parents/guardians still wish to enroll their students in one or more G/T classes, they may complete the Course Placement Review form.

# Who can initiate the placement process in middle school?

- Families
- Teachers
- Students





# Measures Included in Placement Process

- Ability Measure (CogAT or SCAT)
- Standardized assessments (MAP, PARCC)
- Student work samples
  - Interpretation
  - Critique
  - Analysis
  - Creative Problem Solving
- Student grades on assignments requiring critical, analytical, and/or creative thinking
- Documentation from families

# Extended Day/Extended Year

- Accelerated Mathematics
- Visual Arts - G/T Art
- G/T Orchestra, G/T Symphonic Band, and G/T Chorus
- G/T Summer Institutes for Talent Development

# Middle School GT Research Class

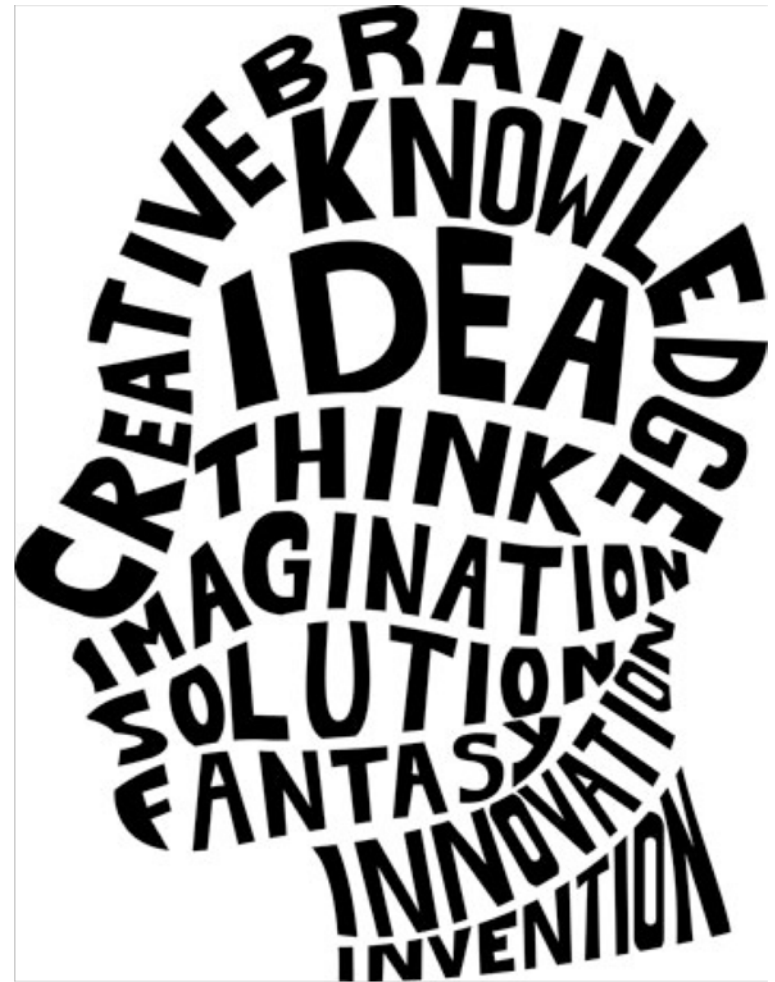
- Authentic research to address real-world problem
- For students enrolled in G/T Math and G/T English based upon G/T Placement Committee recommendations





# Research

- Original
- Primary Research Methods
- Authentic Product
- Authentic Audience
- Contribution to the Community/Field



# Opportunities for Parent Engagement

- HCPSS G/T Website:  
[www.hcpss.org/academics/gt](http://www.hcpss.org/academics/gt)
- G/T Parent Academies
- HCPSS News for G/T Program Information
- HCPSS\_GT Twitter



# Contact Information

- Betsy Adelman
- 410-313-2839
- [betsy\\_adelman@hcpss.org](mailto:betsy_adelman@hcpss.org)





